

# Product Specification



## NETBOX MEB-K

### Product Description

NETBOX MEB-K is a built-in power, data and multimedia unit for seating furniture applications.

### Product Specification

- Comes in 2 gang configuration
- Customisable into various configurations
- Sleek and attractive design
- Comes with built in starter cable
- Plug & Play technology

Standard set consist of the following basic components:

- NETBOX MEB
  - Mounting bracket
  - Cover plate
- Fabric and cushion are not included

### Application Range

- Collaborative Areas
- Airport Lounge
- Residential Home

### Technical Details

- Rated for 110V to 250V and a maximum of 20A according to country specific standards
- Low concentration of heavy metal
- Material: PA-FR (self-extinguishing according to UL94)
- Wiring: 3 x 1.5mm<sup>2</sup> standard; 3 x 2.5mm<sup>2</sup> upon request

Please follow local standards for electrical installation.



**A. & H. Meyer GmbH**  
Leuchten und Büroelektrik

Fermke 8  
32694 Dörentrup  
Germany

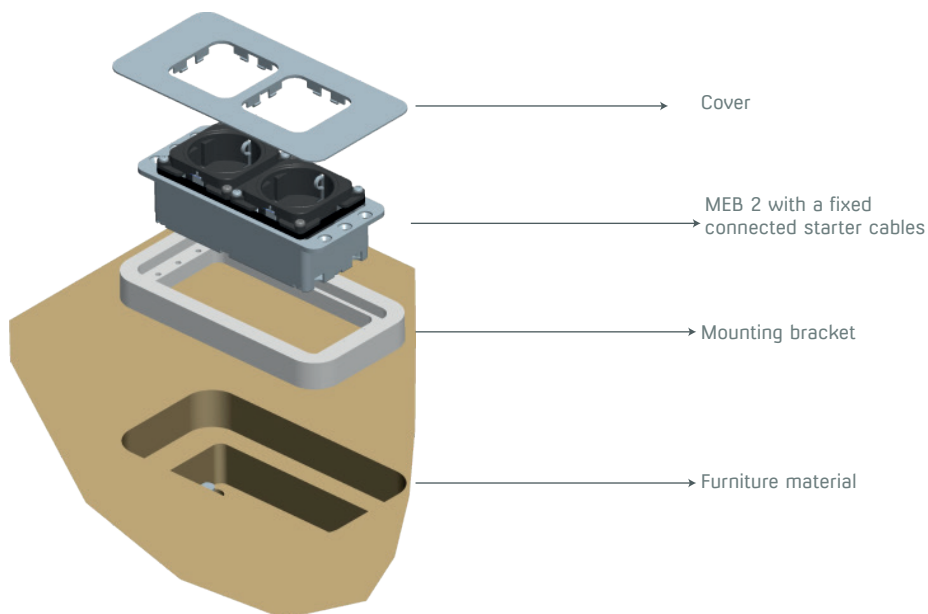
T: +49 5265 9488 0  
F: +49 5265 9488 11  
[www.ah-meyer.de](http://www.ah-meyer.de)

**A. & H. Meyer Sdn Bhd**  
(528797-M)  
No. 3, Jalan Astaka U8/84  
Section U8, Bukit Jelutong  
40150 Shah Alam, Selangor  
Malaysia

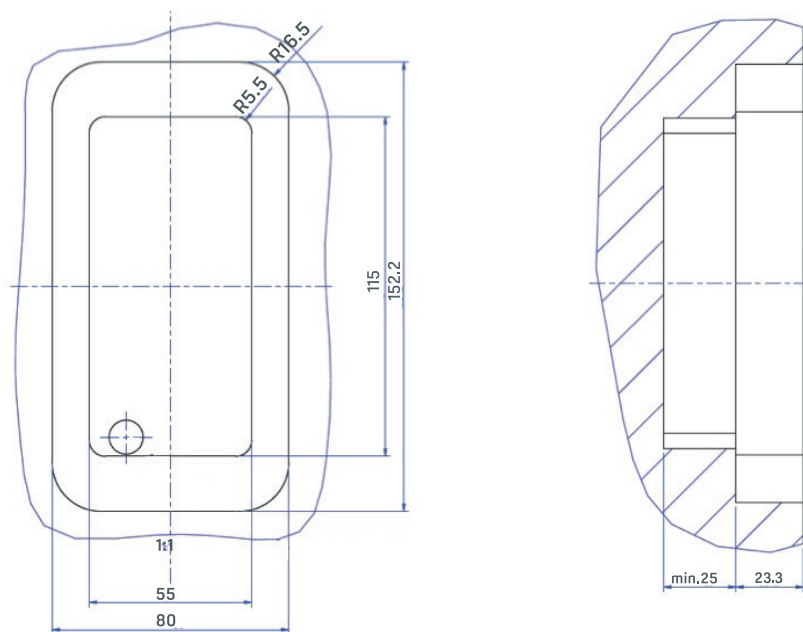
T: +603 7845 7277  
F: +603 7845 2155  
[sales@ah-meyer.com.my](mailto:sales@ah-meyer.com.my)

IN BUSINESS  
ALL THINGS ARE  
CONNECTED

## Dimensions



## Cut Out



## Standards and Approvals

Country	Malaysia	Singapore Hong Kong	India	China	Australia New Zealand	Japan	GCC Countries	Korea
Approvals / Test Institute								