



A. & H. Meyer GmbH
Leuchten und Büroelektrik

Fermke 8
32694 Dörentrup
Germany

T: +49 5265 9488 0
F: +49 5265 9488 11
www.ah-meyer.de

A. & H. Meyer Sdn Bhd
(528797-M)
No. 3, Jalan Astaka U8/84
Section U8, Bukit Jelutong
40150 Shah Alam, Selangor
Malaysia

T: +603 7845 7277
F: +603 7845 2155
sales@ah-meyer.com.my

+ ZENS® PuK3 Wireless Charger

Product Description

The ZENS PuK 3 is a fast charging device that decreases charging time dramatically. The device works based on induction technology. The PuK is equipped with a very large coil which continuously detects a device's signal and starts charging automatically as soon as a Qi device is placed on top of the charger. It allows you to turn almost any flat surface into a wireless charging spot with no visual impact on design aesthetics.

Product Specification

- Quick installation
- Comes with main adapter
- Suitable for 80mm grommet
- Surface or sub-surface installation
- Direct access to power charging
- IP Rating: IP-43 water resistant rating
- Aluminium body to ensure lowest operation temperature
- Automatic shutdown once fully charged
- Ultra low standby power
- Can be installed in almost any material (except steel)

Application Range

- Executive Desks
- Workstations
- Home Office
- Conference Tables
- Collaborative Areas
- Reception Desk
- Hotel Rooms

Cover Colours

- Black
- White

Technical Details

Transmitter unit

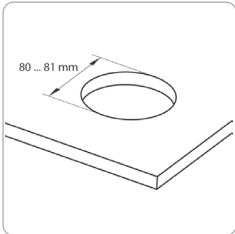
Input voltage	15V
Output current	1.5A
Charging capacity	15W
Switching frequency	110 to 125 kHz
Operating temperature	0 to 35°C
Storage temperature	-20 to +70°C

Power Supply

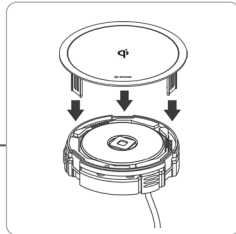
Input Voltage	100 to 240 V AC
Output Current	1.5A DC max
Input Frequency	50/60 Hz
Output Voltage	15.0 V DC +/- 5%
Efficiency Level	Energy Efficiency Class V
Standby Power	< 0.3 W
Cable Length	1800 ± 50mm

Installation Guide

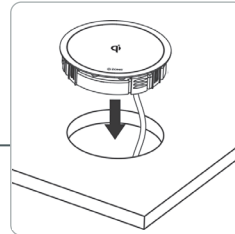
Surface Installation



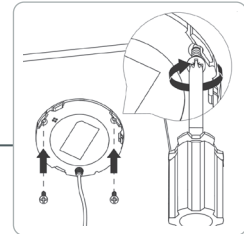
Make a 80-81mm grommet hole at the desired spot of your table



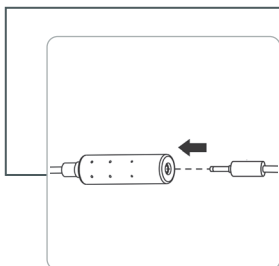
Insert the cover to the wireless charger unit



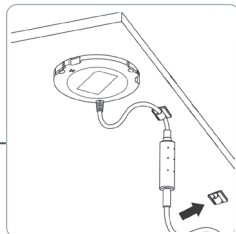
Insert the unit to the pre-cut grommet hole



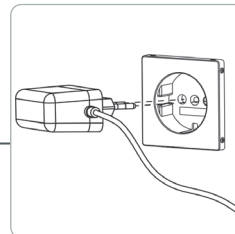
Tighten the unit by screwing the 3 screws to ensure unit fits to the grommet hole



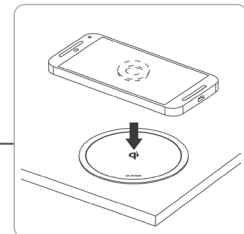
Connect the power cable to the wireless charger port



Recommended to secure the cable using a cable clip underneath the table top

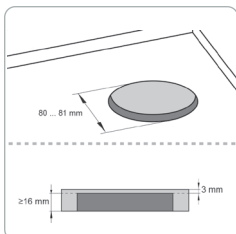


Connect the power plug to the power source

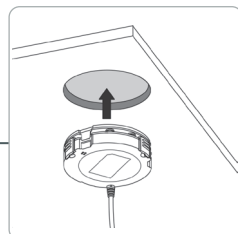


Installed unit is ready to use once power plug is connected to power source

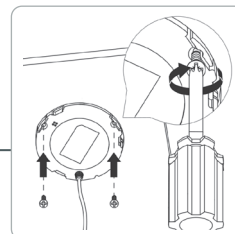
Sub-surface Installation



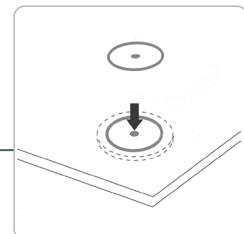
Chamfer a 80-81mm grommet hole at your desired spot below the table top, ensure you maintain a 3mm thickness



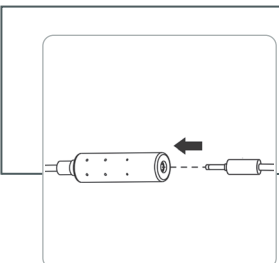
Insert the unit to the grommet hole from the bottom



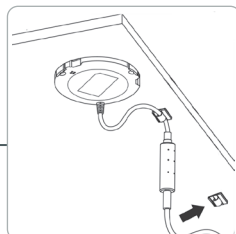
Tighten the unit by screwing the 3 screws to ensure unit fits to the grommet hole



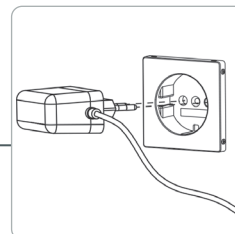
Stick the ZENS icon sticker on the tabletop to indicate the charging spot



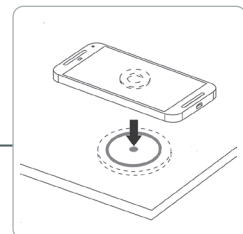
Connect the power cable to the wireless charger port



Recommended to secure the cable using a cable clip underneath the table top



Connect the power plug to the power source



Installed unit is ready to use once power plug is connected to power source