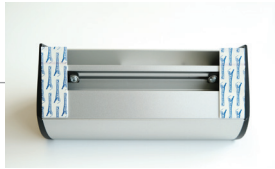


## Installation Guide

### ① Mounting with Powerstrips



Peel off one of the protective layer and apply a Powerstrip at each end of the box.

Ensure it does not exceed the front end of the box.



Peel off the other protective layer of the Powerstrip for both sides.

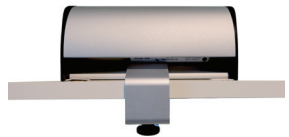
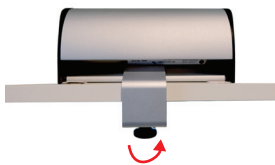


Place the box at the desired spot.



Press firmly for 5-10 seconds to ensure the box sits firmly on the surface.

### ② Mounting with clamp



For dimensions  
Please refer to the back.

A. & H. Meyer Sdn Bhd (528797-M)

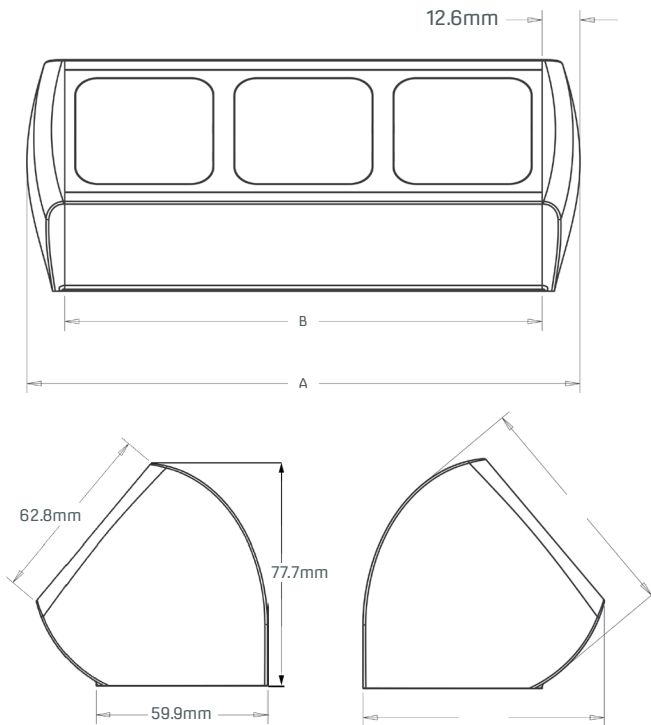
No. 3, Jalan Astaka U8/84  
 Section U8, Bukit Jelutong  
 40150 Shah Alam, Selangor  
 Malaysia

T: +60 3 7845 7277

W: [www.ah-meyer.com.my](http://www.ah-meyer.com.my)

E: [sales@ah-meyer.com.my](mailto:sales@ah-meyer.com.my)

## Dimensions



M	2	3	4	5	6	7	8	9	10	Quantity of module outlets
A	131.2	184.2	237.2	290.2	343.2	396.2	449.2	502.2	555.2	Total length
B	106	159	212	265	318	371	424	477	530	Total length of profile

\*All measurements are in mm

For Installation Guide  
 Please refer to the back.