

A. & H. Meyer Sdn Bhd (528797-M)

No. 3, Jalan Astaka U8/84
Section U8, Bukit Jelutong
40150 Shah Alam, Selangor
Malaysia

T: +60 3 7845 7277
W: www.ah-meyer.com.my
E: sales@ah-meyer.com.my

Installation Guide

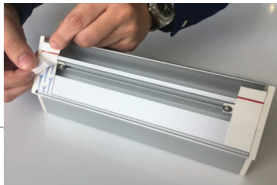
① Mounting with Powerstrips



Peel off one of the protective layer and apply Tesa Powerstrip at each end of the box.



Ensure it does not exceed the front end of the box.



Peel off the protective layer for both sides.



Place the box at the desired spot.

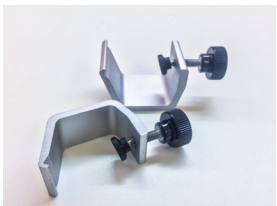


Press firmly for 5-10 seconds to ensure the box sits firmly on the surface.



For dimensions
Please refer to the back.

② Mounting with clamp

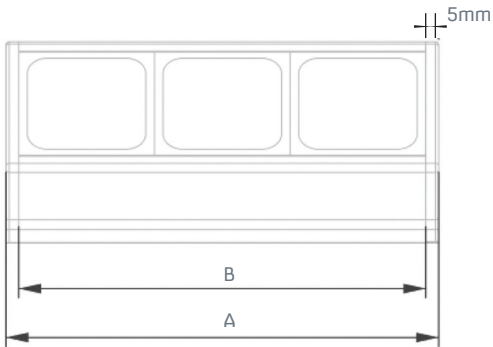


A. & H. Meyer Sdn Bhd (528797-M)

No. 3, Jalan Astaka U8/84
Section U8, Bukit Jelutong
40150 Shah Alam, Selangor
Malaysia

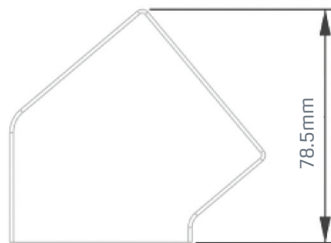
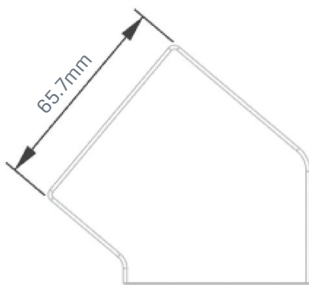
T: +60 3 7845 7277
W: www.ah-meyer.com.my
E: sales@ah-meyer.com.my

Dimensions



M	A	B
2	116	106
3	169	159
4	222	212
5	275	265
6	328	318
7	381	371
8	434	424
9	487	477
10	540	530

M - Quantity of Module Outlets
A - Total Length
B - Total Length of Profile



For Installation Guide
Please refer to the back.