




NETBOX Point Duplex



A. & H. MEYER

A brand of  **Legrand**

A. & H. Meyer Sdn Bhd (528797-M)

No. 3, Jalan Astaka U8/84
Section U8, Bukit Jelutong
40150 Shah Alam, Selangor
Malaysia

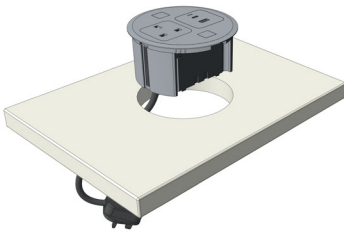
T: +60 3 7845 7277

W: www.ah-meyer.com.my

E: sales@ah-meyer.com.my

Installation Guide

1.



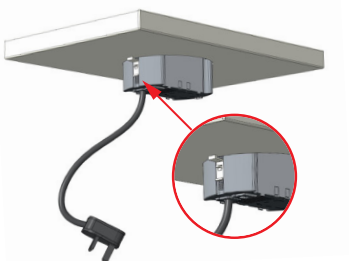
Place the NETBOX Point Duplex into the pre-cut 120mm grommet hole

2.



Secure the NETBOX Point Duplex into position by inserting the 2 NETclips.

3.



Ensure the NETclips are pushed until the end. Secure cable and insert into power source or data outlet if required.

4.



NETBOX Point Duplex is ready to use

For dimensions
Please refer to the back.



NETBOX Point Duplex

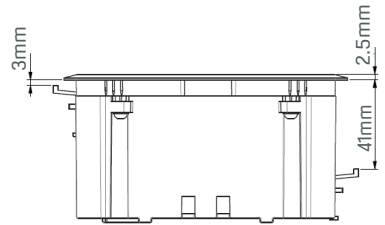
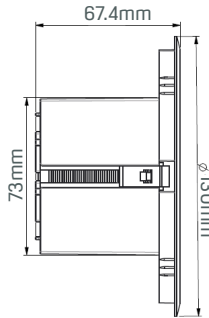
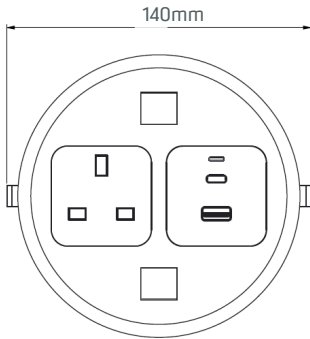


A. & H. Meyer Sdn Bhd (528797-M)

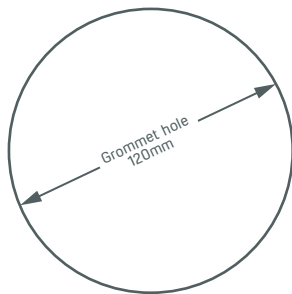
No. 3, Jalan Astaka U8/84
Section U8, Bukit Jelutong
40150 Shah Alam, Selangor
Malaysia

T: +60 3 7845 7277
W: www.ah-meyer.com.my
E: sales@ah-meyer.com.my

Dimensions



Cut Out



For Installation Guide
Please refer to the back.