



NETBOX Profilebox Sub

Product Specification

NETBOX Profilebox Sub is a standard power, data and multimedia unit in aluminium finish for underdesk solutions. The unit could be easily mounted under the table by using our mushroom bracket and screw provided.

Product Description

- Durable and sturdy aluminium profile
- Individual configuration
- Customizable for up to 5 outlet modules
- Separate power circuits possible
- Optional: Male and female connectors in a gang
- Plug & Play technology

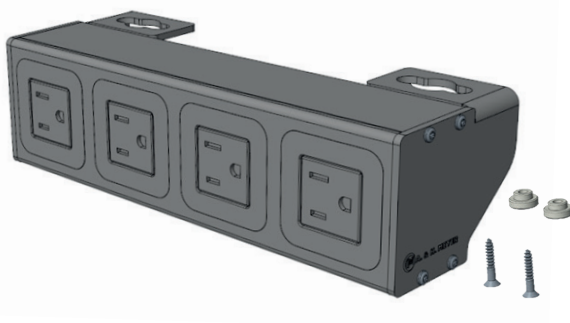
Application Range

- Workstations
- Home Offices
- Meeting Tables
- Training Tables
- Reception Counter

Technical Details

- Rated for 110 to 250V, and up to a maximum of 20A
- Material: Aluminium; ABS-FR; low concentration of heavy metal;
- Power and data are isolated to eliminate interferences
- Available in various lengths
- Tool-free installation
- Wiring: 3 x 1.5mm² standard; 3 x 2.5mm² upon request

Please follow local standards for electrical installation.



A. & H. Meyer GmbH
Leuchten und Büroelektrik

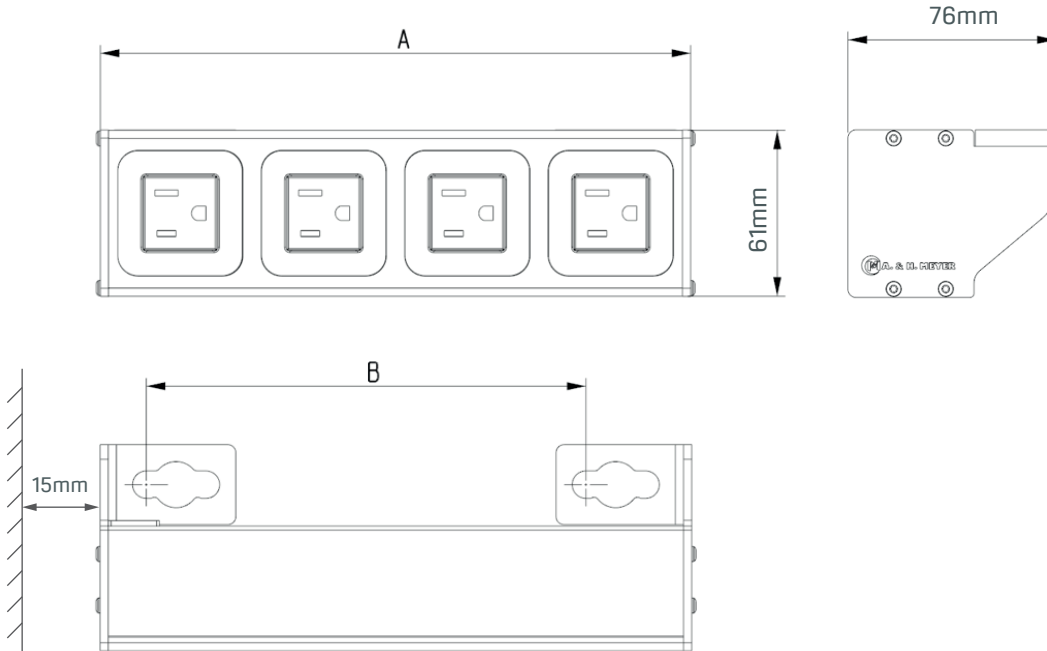
Fermke 8
32694 Dörentrup
Germany

T: +49 5265 9488 0
F: +49 5265 9488 11
www.ah-meyer.de

A. & H. Meyer Sdn Bhd
(528797-M)
No. 3, Jalan Astaka U8/84
Section U8, Bukit Jelutong
40150 Shah Alam, Selangor
Malaysia

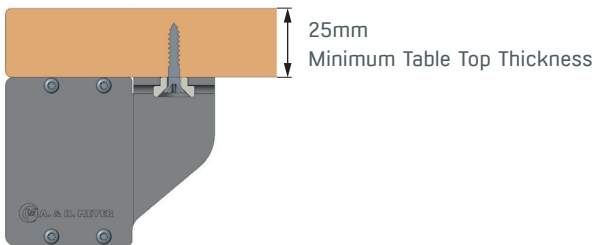
T: +603 7845 7277
F: +603 7845 2155
sales@ah-meyer.com.my

Dimensions



Ensure you have a minimum distance of 15mm in between the NETBOX Profilebox Sub and the table edge or neighbouring obstacles.

M	2	3	4	5	M = Number of Module Outlets
A	112	165	218	271	A = Total Profile Length
B	56	109	162	215	B = Distance of Mushroom Hole to Hole Location



Standards and Approvals

Country	Malaysia	Singapore Hong Kong	India	China	Australia New Zealand	Japan	GCC Countries	Indonesia	Korea
Approvals / Test Institute	